

Project Update

Beebe River to Whitefield (X178) Line Rebuild Project

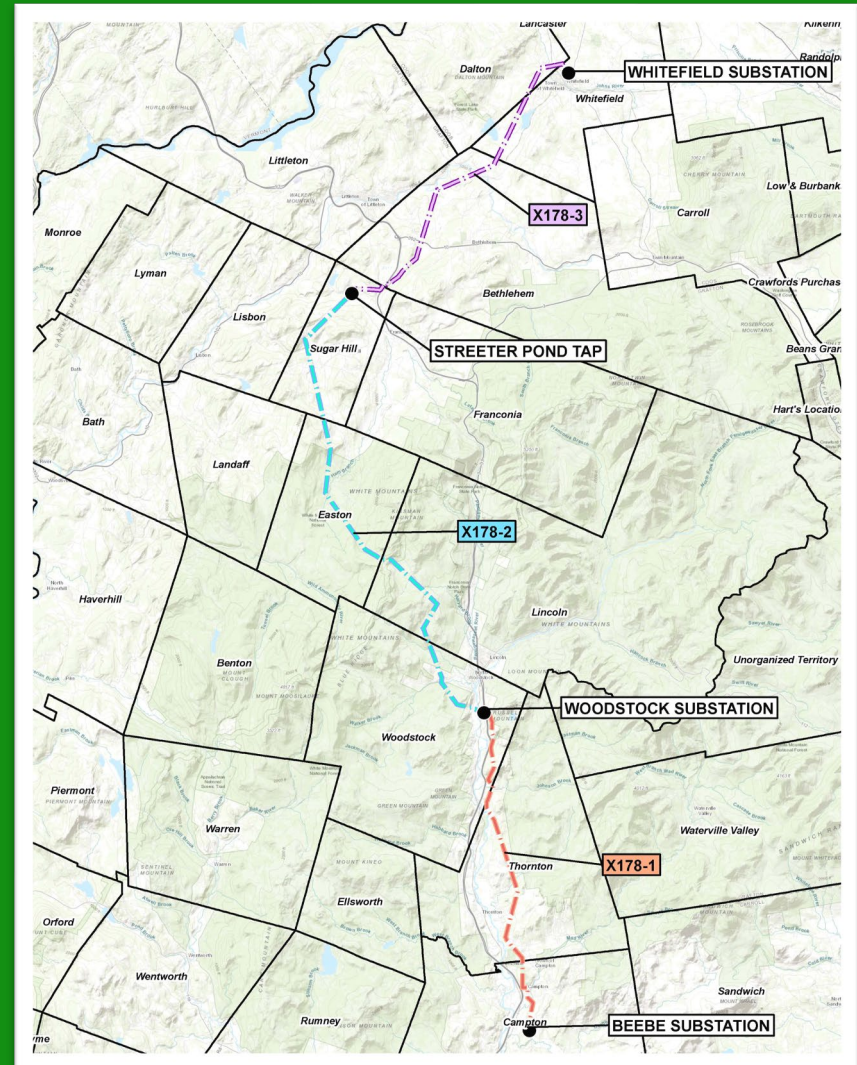
EVERSOURCE

We want to hear from you!

In August we sent you a postcard to invite you to learn about the upcoming line rebuild project taking place within the existing right-of-way (power line corridor) of the X178 Line, a 115kV transmission line.

We'd like to speak with you to brief you on this project or meet you on your property to discuss the project and answer any questions you may have.

Please contact us at our Projects Hotline 1-888-926-5334 or email NHProjectsInfo@eversource.com



Beebe River to Whitefield (X178) Line Rebuild Project

Project Information

This transmission line is 49 miles long and is located between the Beebe River Substation in Campton and the Whitefield Substation in Whitefield, N.H. In total, 570 wooden H-frame structures will be replaced, and new conductor (power line) and fiber optic cable, known as Optical Ground Wire (OPGW), will be installed the length of the line. The project also includes replacing poles along the Streeter Pond Tap, a 225-foot-long power line that connects the U199 transmission line to the X178 line in Sugar Hill.

Project Schedule *(subject to change)*

Regional Pre-Construction Information Session: Spring 2024

Construction: July 2024 through December 2026 (duration includes all three segments)

Site Restoration: Ongoing through construction for stabilization and upon completion

More Information & Sign Up for Email Updates

www.eversource.com/X178-line-project

Eversource
PO Box 330
Manchester, NH
03105

